



Dear Bethel Family,

**Lent Week 3: Growing in Service**

When he came to Nazareth, where he had been brought up, he went to the synagogue on the sabbath day, as was his custom. He stood up to read, and the scroll of the prophet Isaiah was given to him. He unrolled the scroll and found the place where it was written: “The Spirit of the Lord is upon me, because he has anointed me to bring good news to the poor. He has sent me to proclaim release to the captives and recovery of

sight to the blind, to let the oppressed go free, to proclaim the year of the Lord’s favor.” (Luke 4:16-19)

Jesus’ ministry was focused on serving people’s needs. He healed, fed, and taught crowds of people wherever he went. His ministry of service included all people, but particularly those who were overlooked or excluded. When Jesus went to his hometown synagogue and was asked to read, he chose a passage from Isaiah that was a Messianic prophesy. This list reads like a job description of Jesus’ ministry. Through his public ministry, Jesus shows us God’s heart through deeds of service to all people. Join us Sunday as we seek to grow in service to others and God.

Blessings,  
Pastor Ben

**Sunday, March 3**

*with Pastor Ben Sandin*

- 8:45am - Traditional Worship
- 9:50am - Adult Ed: Spiritual Growth
- 10:45pm - Contemporary Worship

[Click here to see the Bulletins](#)



**The Week Ahead at Bethel**

**Sunday, March 3**

- 8:45am - Traditional Worship Service
- 9:30am - Confirmation Class
- 9:50am - Sr High Sunday Gathering

9:50am - Kid Connection Sunday School  
9:50am - Sr. High Sunday School  
9:50am - Adult Ed: Spiritual Growth  
**10:45am - Contemporary Worship Service**  
11:45am - Listening Team Debrief  
6:30pm - Handbell Choir Rehearsal

**Monday, March 4**

9:00am - Men of Monday  
9:15am - Quilters

**Tuesday, March 5**

10am-1pm Office is open  
7:00pm - Open Forum Meeting on Zoom

**Wednesday, March 6**

10am-3pm Office is open  
10:00am - Women of Wednesday  
6:30pm - Sr High Fellowship  
7:00pm - 1st Wednesday Speaker Event

**Thursday, March 7**

10am-3pm Office is open  
7:30pm Bethel Choir Rehearsal

**Friday, March 8**

**Saturday, March 9**

---

**February 2024 Episode of Bethel Staff Loves You**

Click on the adjacent image to watch the January episode of "Bethel Staff Loves You."



---

**Please send in your Church Directory updates**

Please review your address, phone, and email in the current directory and send in your updates on an attendance card..



**Girl Scout Cookies**

Thank you Bethel for supporting our local Girl Scouts! Your cookie purchases are helping Olivia and Emma run their own businesses, learn about finances, and fund their girl scout adventures this year. If you missed our cookie booth or need a refresh, feel free to reach out to Lauren Burch, and she can help arrange an order.

## OUR LENTEN JOURNEY

### Bethel Farm Project for Lent

Check out the trifold board in the narthex, and the flyer [here](#), to see all the ways you may contribute to Bethel's Farm Project. Each item on the board that needs funding, indicates a "goal" for the number of that item needed for the whole project to be a success. Items include: Microloan for a woman to start a small business, Latrine (Tom has already volunteered to cover this one), Seeds and gardening tools, Fruit tree seedling, irrigation system, Animals, Simple water well, Water filter, Community Vegetable Garden.



You may write a check to Bethel Lutheran and put it in the Offering plate or hand it to Amanda Laughlin. Money is collected all during Lent and then will be given to ELCA Goodgifts to disseminate.

### Sundays in Lent

*9:50am in the Fireside Room*

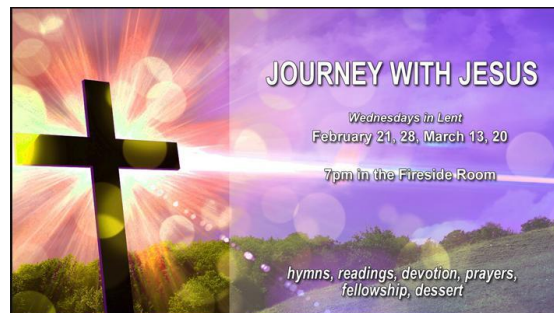
Pastor Ben will lead a 5-week sermon series and corresponding Bible Study on Spiritual Growth during the season of Lent. Each week will feature a different aspect of our spiritual life and how we can growth in our relationship with God and one another.



### Wednesdays in Lent

*7pm in the Fireside Room*

Gather together for worship in the Fireside Room, with a focus on the theme "Journey with Jesus." We will sing hymns, have readings, a devotion, prayers, fellowship, and dessert.



### Holy Week Worship Services

*March 24-31*

Holy Week begins with **Palm Sunday**.  
Worship Services at 8:45am and 10:45am.

**Maundy Thursday** Worship Service is March 28 at 7pm and includes First Communion Students.

**Good Friday** is March 29 with Worship Service at 7pm.

**Easter Sunday** is March 31 with Sunrise Worship Service at 6:30am at Cupertino Memorial Park, and Worship Services at 8:45am and 10:45am at Bethel.

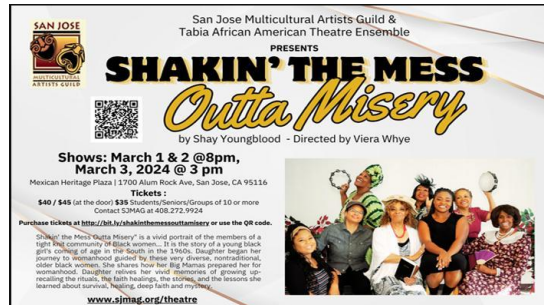




## Sing the Hallelujah Chorus

Sunday, March 31 at 8:45am

Attend Bethel Choir rehearsals on Thursdays at 7:30pm in the Sanctuary to prepare to sing with the Choir at the 8:45am Worship Service on Easter Sunday... or just show up on Easter and sing with the choir!



## See Jennifer Green in "Shakin' The Mess Outta Misery"

March 1,2,3

at the Mexican Heritage Plaza,  
1700 Alum Rock Avenue,  
San Jose

This is a compelling and fun journey of storytelling as these "Big Mamas" share their wisdom with Daughter! Warm, fun, and captivating stories of sisterhood, family, and how

a village/community raises a child. Watch for our own Jennifer Green in this production by Tabia African American Theater Ensemble!

See more information, click [here](#).

Tickets are on Eventbrite or call 408-272-9924. Group tickets are available.

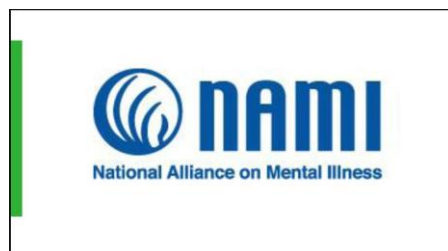
## OPEN FORUM & SPECIAL CONGREGATIONAL MEETING

Tuesday, March 5 at 7pm on Zoom

Sunday, March 10 at noon in the Sanctuary

Click [here](#) to attend the Open Forum Meeting, led by the Finance Committee, to share information and answer any questions about the upcoming vote on leasing Bethel property.

Then attend the Special Congregational Meeting at Bethel to vote on the proposal.



## 1st Wednesday Speaker Series

March 6 at 7pm in the Fireside Room

Come and hear a presentation from 2 adults living with mental health conditions, from the organization NAMI. Hear their stories, see videos, and ask questions. Light reception at 8pm.

NAMI (National Alliance on Mental Illness) presents this talk "In Our Own Voice" which provides a personal

perspective of mental health conditions, as leaders with lived experience talk openly about what it's like to have a mental health condition.

This presentation provides:

- An opportunity to hear open and honest perspectives on a highly misunderstood topic
- A chance to ask leaders questions, allowing for a deeper understanding of mental health conditions and dispelling of stereotypes and misconceptions
- The understanding that people with mental health conditions have lives enriched by hopes, dreams and goals
- Information on how to learn more about mental health and get involved with the mental health community

For more information visit:

<https://namisantaclara.org/nami-in-our-own-voice/>

## Out 'n About Goes on a St Paddy's Brewery Tour in Santa Cruz

*Saturday, March 16 at 10:45am-4:15pm*

Join the fun - a day in Santa Cruz - at our 13th Annual St. Paddy's Day Brewery Tour. We'll make 3 stops to sample beer, enjoy food, and end with ice cream. Meet in the Bethel parking lot at 10:45am. See the info [here](#) and sign up at [www.bethelcupertino.org](http://www.bethelcupertino.org). See Molly Schrey if you have questions.



## San Jose Family Shelter Breakfast needs Volunteers

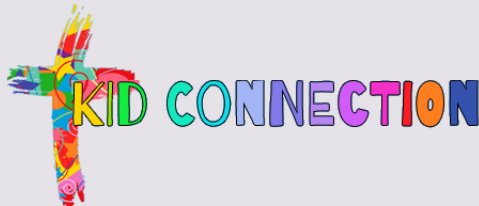
The San Jose Family Shelter needs volunteers to cook or serve, on the follow dates in 2024:

Sunday, April 14, Sunday, June 9,  
Sunday, August 11, Sunday, October 13, Sunday, December 8

Cook Volunteers are needed 5:30am - 7am.

Server Volunteers are needed 6:45am - 8:15am.

Contact is Chris Ford at [chris@island2.com](mailto:chris@island2.com).



**Sunday School**  
Preschool-1st Grade Group  
**Children's Choir**  
3rd-5th Grade Group  
**Parent Fellowship**

### Kid Connection Sunday School

**Sunday, March 3 at 9:50am to 10:40am** - Kids meet for opening, then go to classrooms. Our Bible point is "God is encouraging" so we encourage others. (Acts 27)

### First Communion Class

**Sunday, March 10 and Sunday, March 17 at 9:50am-10:40am**, during Kid Connection time. Led by Pastor Ben and Amanda, parents are encouraged to attend with their child. There will be bread baking on Maundy Thursday. Sign up with Amanda.

### Children's Choir

Meets on **Sunday, March 3**, at 11:45am - 1:15pm.

### Scuba Vacation Bible School

VBS 2024 is **Monday-Friday, July 8-12** from 9am-noon.

Save the dates! Registration for VBS will open in the spring. There will also be an afternoon program that will be Scuba themed, for children whose parent(s) work full time, or for anyone who would find this helpful. There will be an added cost and it has limited space. Contact Amanda if you have any questions.

*For more information and to receive the Kid Connection emails, contact Amanda Laughlin.*



## Confirmation Class (6th, 7th, 8th graders)

**Sunday, March 3**

Time and time again God watches while His Chosen People continue to do their own thing in spite of His warnings. In spite of His voice spoken through the Prophets. In spite of "outsiders" being allowed to do damage to their safety, property and well-being. Will they ever learn? Will **WE** ever learn?

*For more information about the Confirmation program at Bethel, contact Robyn Winegardner.*



## Sr. High Students

**Sunday, March 3**

Sr High Sunday class.

Wednesdays at 6:30pm - dinner and discussion.

*For more information on Sr. High activities and to get on the email list, contact Tom Hoegel.*

## Your Giving

Here are the monthly Benevolence Giving Reports:

<https://www.bethelcupertino.org/insideBethel/index.php#Benevolence>

## Ways to give to Bethel:

Contact Fara Brock in the church office at 408-252-8500

or visit <https://www.bethelcupertino.org/giving>

*For more information on Bethel Cupertino  
visit [bethelcupertino.org](https://www.bethelcupertino.org)*

Lead Pastor: Pastor Ben Sandin  
Council President: Doreen Baldwin  
Congregational Life: Tom Hoegel  
Children's Ministry: Amanda Laughlin  
Adult Ministry: Mary Deutscher  
Business Administrator: Fara Brock

Bethel Lutheran Church • 10181 Finch Avenue, Cupertino, CA 95014  
408-252-8500