



Bethel Lutheran Church

Friday, December 27, 2024

Dear Bethel Family,

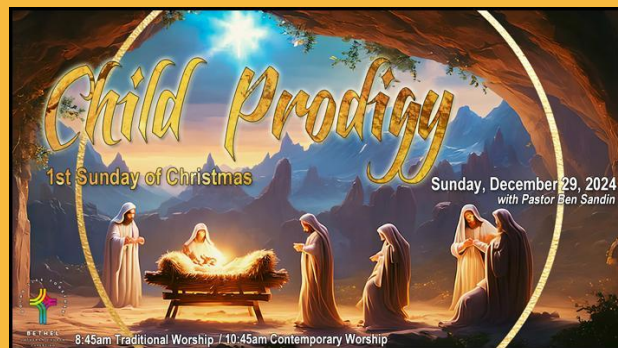
Join us this Sunday as we continue to celebrate Christmas by examining a story from Jesus' childhood visit to the Temple.

**Blessings,
Pastor Ben Sandin**



December 29
First Sunday of Christmas
message given by Chris Christensen

8:45am - Traditional Worship
10:45am - Contemporary Worship



[Click here to see the bulletins](#)

The Week Ahead at Bethel

Sunday, December 29

8:45am - Traditional Worship Service
10:45am - Contemporary Worship Service

Monday, December 30

Tuesday, December 31, New Years Eve
Office Closed

Wednesday, January 1, New Years Day
Office Closed

Thursday, January 2
Office Open 10am-3pm

Friday, January 3

Saturday, January 4
9:00am - SVKS uses Bethel Parking Lot

End of Year Giving

You are probably receiving many requests for support this time of year. Please consider making a December

contribution to help keep Bethel's ministries and outreach thriving in 2025. The church budget includes a year end giving 'bump' so this is a perfect time to catch up on your Faith Promise or make an additional gift. The stock market has been doing really well and you'll have no capital gain tax on donated stock. All gifts received or postmarked by December 31, 2024 will be included on your 2024 Statement of Contributions for tax purposes. Please contact Fara in the church office (408-252-8500) if you have questions about end of year giving.

Church Office Hours During Holiday Weeks

The church office will be closed from Tuesday, December 24 through Wednesday, January 1. Regular office hours will resume on Thursday, January 2. End of year check gifts can be dropped in the church mail slot or postmarked by Tuesday, December 31.

2025 Offering Envelopes

If you use Offering Envelopes for giving, then you can pick up your 2025 envelopes from the back of the sanctuary December 8 through December 22. After December 22, the envelopes may be picked up from the church office. If you use automated giving and no longer need offering envelopes, please let Mary in the church office know.

Got \$5K Ideas?

Submit by Tuesday, January 14

The Bethel Endowment Committee requests your ideas as to potential uses of up to \$5,000 from the endowment account. Suitable projects must be in the areas of Outreach, Education, or Charitable Work. The Committee is requesting new and visionary ideas. If you have an idea or proposal, please reach out to Ralph Miller or the endowment team. Please send ideas by Tuesday, January 14.



2025

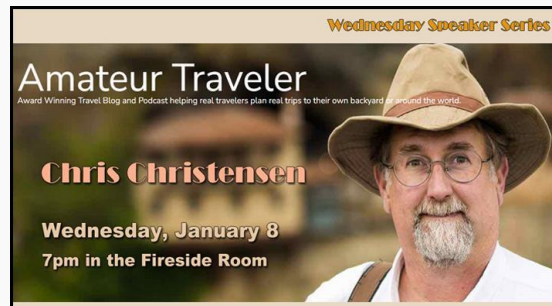


NEW: Knitting Ministry (Kids may also crochet)

Do you like to knit? How about crochet? Ellen Aist is starting a new knitting ministry, in January, to make hats for the unhoused. Yarn, and loom for crocheting, will be provided. If you would like to be part of this ministry, contact Ellen Aist or Amanda Laughlin.

Wednesday Speaker Series January 8, at 7pm in the Fireside Room

Chris Christensen will share what he has learned from his many years of travel for his podcast "The Amateur Traveler."





Out 'n About Plays Games at Bethel

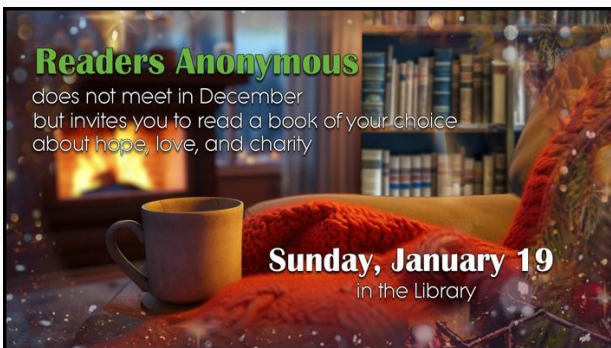
Saturday, January 11, 5-9pm

All are invited to come to the Fireside Room for a Game Night. Bring your favorite board game and/or puzzle and we'll figure out which ones we are going to play. Pizza is provided but feel free to bring snacks. Contact is Paul Baldwin.

Sunday Bible Study: Sermon on the Mount

January 12-February 9, at 9:50am in the Fireside Room

Pastor Ben will lead a 5 week Bible Study on Jesus' famous Sermon on the Mount on Sundays. For more information contact Pastor Ben.



Readers Anonymous

Sunday, January 19 at 1:30pm, Library

We will not meet in December, but for this month's book selection, please select a book of your own choosing about the season of hope, love, and charity. Our next meeting will be Sunday, January 19, 2025 at 1:30 in the Library.

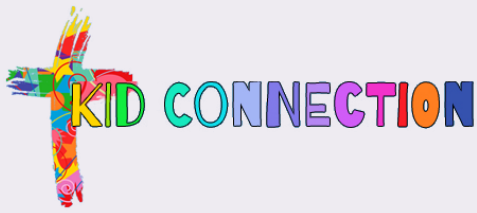
9th Annual Chili Cookoff

Sunday, January 26, noon-1:30pm, Torvend Hall

It's time again for the Annual Chili Cook Off, so let's get cookin'! Whether you are 'in it to win it' with your best recipe, or just comin' for the great eats, RSVP via your bulletin insert (in January) and/or contact Mary Deutscher in the office (408-252-8500).

Break out your western wear and please bring a side dish, bread or dessert to share. We will provide chili toppings, chips, and beverages. Volunteers are needed for set up/clean up.





Sunday School
Preschool-1st Grade Group
Children's Choir
3rd-5th Grade Group
Parent Fellowship

Kid Connection Sunday School (for ages Preschool-5th grade)

Sunday, December 29 - no Kid Connection Sunday School. Kid Connection will resume on Sunday, January 12.

For more information and to receive the Kid Connection emails, contact Amanda Laughlin.



Confirmation (6th, 7th, 8th graders)

As Confirmands spend this week with loved ones and friends, they want to wish you a wonderful wrap to 2024 with a big bow on it.

For more information about the Confirmation program at Bethel, contact Robyn Winegardner.



Sr. High Students

Sundays

9:50am - Sr High Gathering resumes Sunday, January 12

Wednesdays at 6:30pm

Sr High dinner and fellowship resumes after Wednesday, January 15.

contact Tom Hoegel.

For more information on Sr. High activities and to get on the email list,

Your Giving

Here are the monthly Benevolence Giving Reports:

<https://www.bethelcupertino.org/insideBethel/index.php#Benevolence>

Ways to give to Bethel:

Contact Fara Brock in the church office at 408-252-8500
or visit <https://www.bethelcupertino.org/giving>

*For more information on Bethel Cupertino
visit [bethelcupertino.org](https://www.bethelcupertino.org)*

Lead Pastor: Pastor Ben Sandin
Council President: Doreen Baldwin

Congregational Life: Tom Hoegel
Adult Ministry: Mary Deutscher
Children's Ministry: Amanda Laughlin
Business Administrator: Fara Brock

Bethel Lutheran Church • 10181 Finch Avenue, Cupertino, CA 95014
office phone: 408-252-8500

Follow us:

instagram @bethelcupertino
facebook @bethelcupertino